

ITEM number	DESCRIPTION	FURNISHED BY		INSTALLED BY	
		O.G. & E.	CONSUMER	O.G. & E.	CONSUMER
‡ 1	Service Lateral Raceway		X		X
2	Service Lateral	X		X	
** 3	Secondary Connection Box	X			X
4	Meter Base	X			X
5	Service Raceway		X		X
* 6	Service Entrance Conductor		X		X
7	Meter	X		X	
* 8	Service Equipment		X		X
* 9	Grounding Electrode & Grounding Electrode Conductor		X		X

‡ Size and Number of conduits as specified by OG&E
 * Not Shown
 ** Secondary Connection Box shall be bonded to neutral block

- Notes:
1. Connection box size 30 X 36 X 14.
 2. Use Schedule 40 PVC or better.
 3. Refer to U16 for proper identification and marking.
 4. Connection Box to be bonded to neutral block with #6-AWG copper wire.
 5. OG&E equipment is to be installed on outside surface of structure and is not to be recessed.
 6. Secure connection box #428962 with (3) Mac-It head bolts (3/8" x 1") #301404 upon energizing.
 7. **OG&E equipment not to be used for customer grounding.**

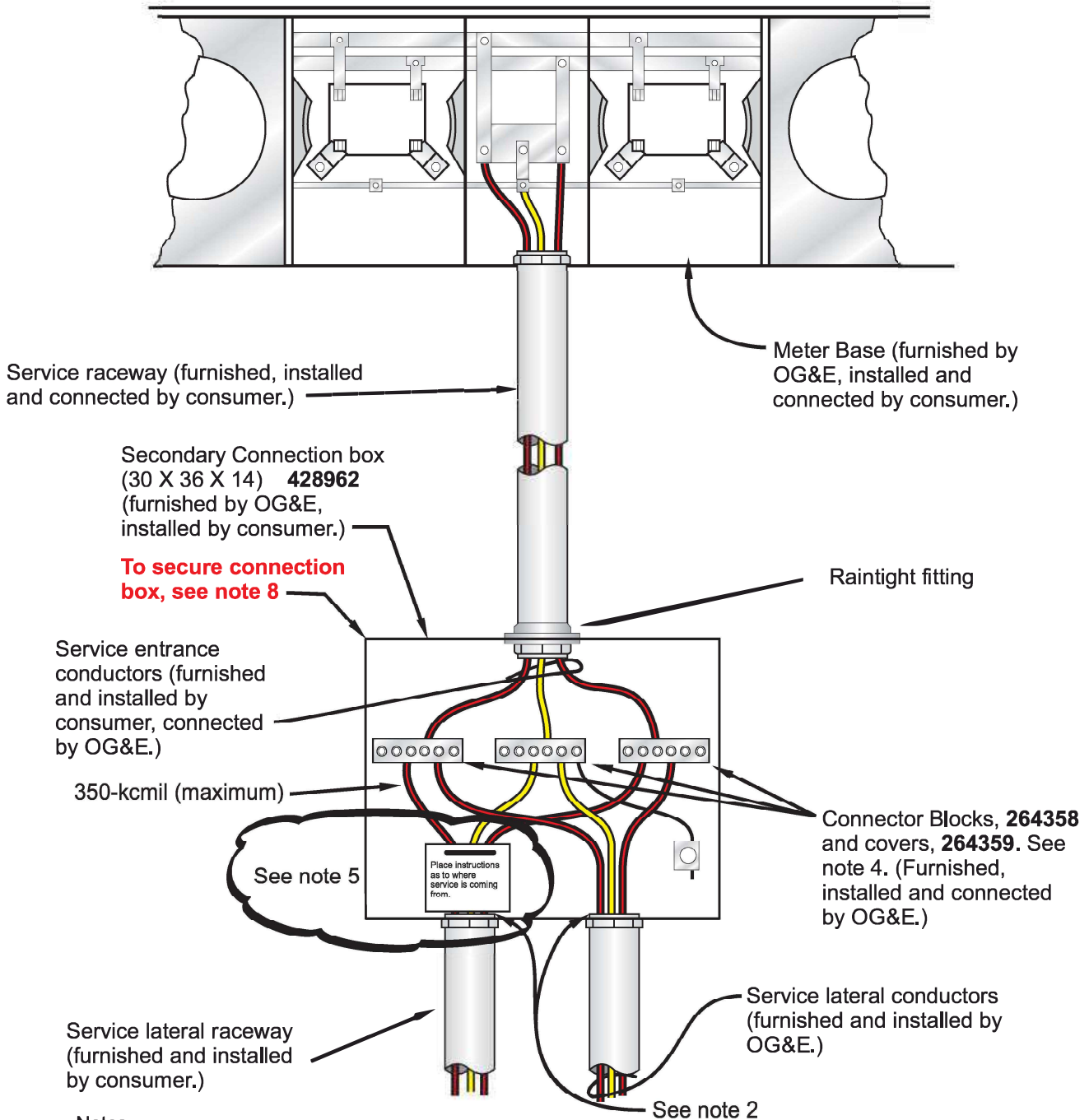
MULTIPLE METER INSTALLATION
200 - AMPERE PER POSITION
SINGLE PHASE 120/240V SELF CONTAINED

The following is a suggested configuration for meter bases for overhead and underground meters in residential and commercial applications. OGE Energy Corp., its subsidiaries and affiliates, disclaim any and all liability for the construction or maintenance practices relating to such suggested configuration. Each individual, company, or entity engaging the work associated with this configuration bears full responsibility for its, his, or her own occupational training, and compliance with all applicable local, state, and national laws and regulations. The configuration is not intended to replace the training, know-how, or instruction that may be needed for safe construction or maintenance.

APPROVED Signatures on File
 SUPERSEDES AUG 2020 ISSUE

U762.1

UNDERGROUND STANDARD
JUL 2016



Notes:

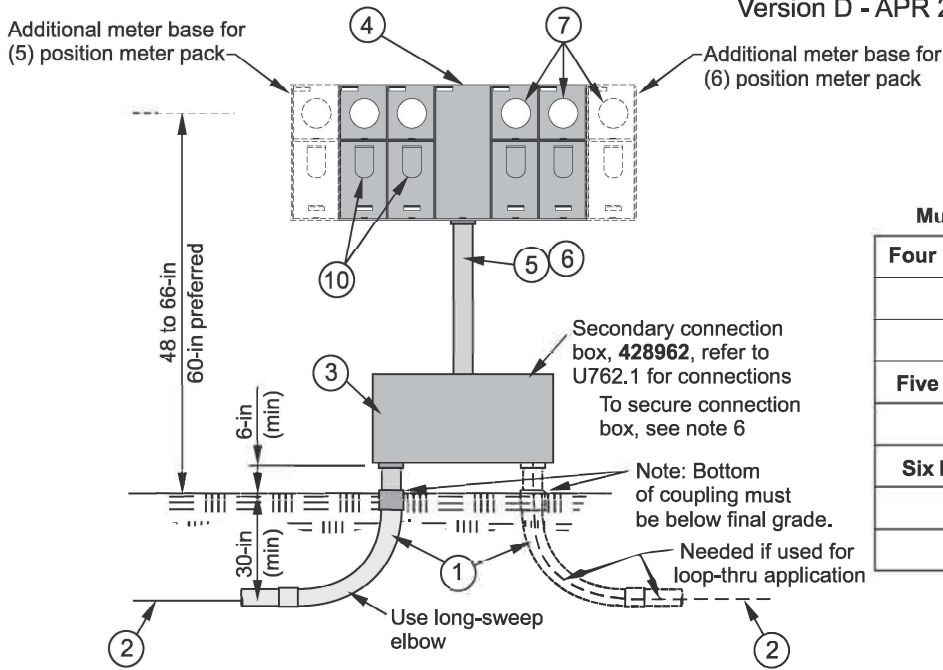
1. Consumer to install service entrance conductors and make connections at meter enclosure.
2. Plastic bushing required for steel conduit to protect cable.
3. Connection box and blocks to be furnished by OG&E.
4. Connection Box to be bonded to neutral block with #6-AWG copper wire.
5. Place identifying tag on service conductors with information relating to where service is coming from (pedestal, transformer, pipe or no pipe under driveway.) Refer to U16 for proper identification and marking.
6. OG&E equipment is to be installed on outside surface of structure and is not to be recessed.
7. Grounding Electrode & Grounding Electrode Conductor (Not shown on Drawing) provided by and installed by customer.
8. **Secure connection box #428962 with (3) Mac-It head bolts (3/8" x 1") #301404 upon energizing.**

CONNECTION DIAGRAM FOR MULTIPLE METER INSTALLATION SINGLE PHASE SELF CONTAINED METERS

The following is a suggested configuration for meter bases for overhead and underground meters in residential and commercial applications. OGE Energy Corp., its subsidiaries and affiliates, disclaim any and all liability for the construction or maintenance practices relating to such suggested configuration. Each individual, company, or entity engaging the work associated with this configuration bears full responsibility for its, his, or her own occupational training, and compliance with all applicable local, state, and national laws and regulations. The configuration is not intended to replace the training, know-how, or instruction that may be needed for safe construction or maintenance.

SUPERSEDES AUG 2014 ISSUE

APPROVED **Signatures on File**



Multi Position Gang Style Meter Packs

Four Position Meter Pack Material Numbers	
125 Amp -	404110
200 Amp -	1057619
Five Position Meter Pack Material Number	
125 Amp -	404112
Six Position Meter Pack Material Number	
Square 125 Amp -	404113
Side by side 125 Amp -	1051810

ITEM number	DESCRIPTION	FURNISHED BY		INSTALLED BY	
		O.G. & E.	CONSUMER	O.G. & E.	CONSUMER
‡ 1	Service Lateral Raceway		X		X
2	Service Lateral	X		X	
** 3	Secondary Connection Box	X			X
4	Multi Position Gang Style Meter Pack	X			X
5	Service Raceway		X		X
* 6	Service Entrance Conductor		X		X
7	Meter	X		X	
*8	Service Equipment		X		X
*9	Grounding Electrode & Grounding Electrode Conductor		X		X
10	Circuit Breakers		X		X

- ‡ Size and Number of conduits as specified by OG&E
- * Not Shown
- ** Secondary Connection Box shall be bonded to neutral block

Notes:

1. Connection box size 30 X 36 X 14.
2. Use Schedule 40 PVC or better.
3. Refer to U16, notes 4, 5, and 6.
4. Connection Box to be bonded to neutral block with #6-AWG copper wire.
5. OG&E equipment is to be installed on outside surface of structure and is not to be recessed.
6. Secure connection box #428962 with (3) Mac-It head bolts (3/8" x 1") #301404 upon energizing.
7. OG&E equipment not to be used for customer grounding.

**MULTIPLE METER INSTALLATION
SINGLE PHASE 120/240-VOLTS SELF CONTAINED**

SUPERSEDES APR 2021 ISSUE

APPROVED

The following is a suggested configuration for meter bases for overhead and underground meters in residential and commercial applications. OGE Energy Corp., its subsidiaries and affiliates, disclaim any and all liability for the construction or maintenance practices relating to such suggested configuration. Each individual, company, or entity engaging the work associated with this configuration bears full responsibility for its, his, or her own occupational training, and compliance with all applicable local, state, and national laws and regulations. The configuration is not intended to replace the training, know-how, or instruction that may be needed for safe construction or maintenance.