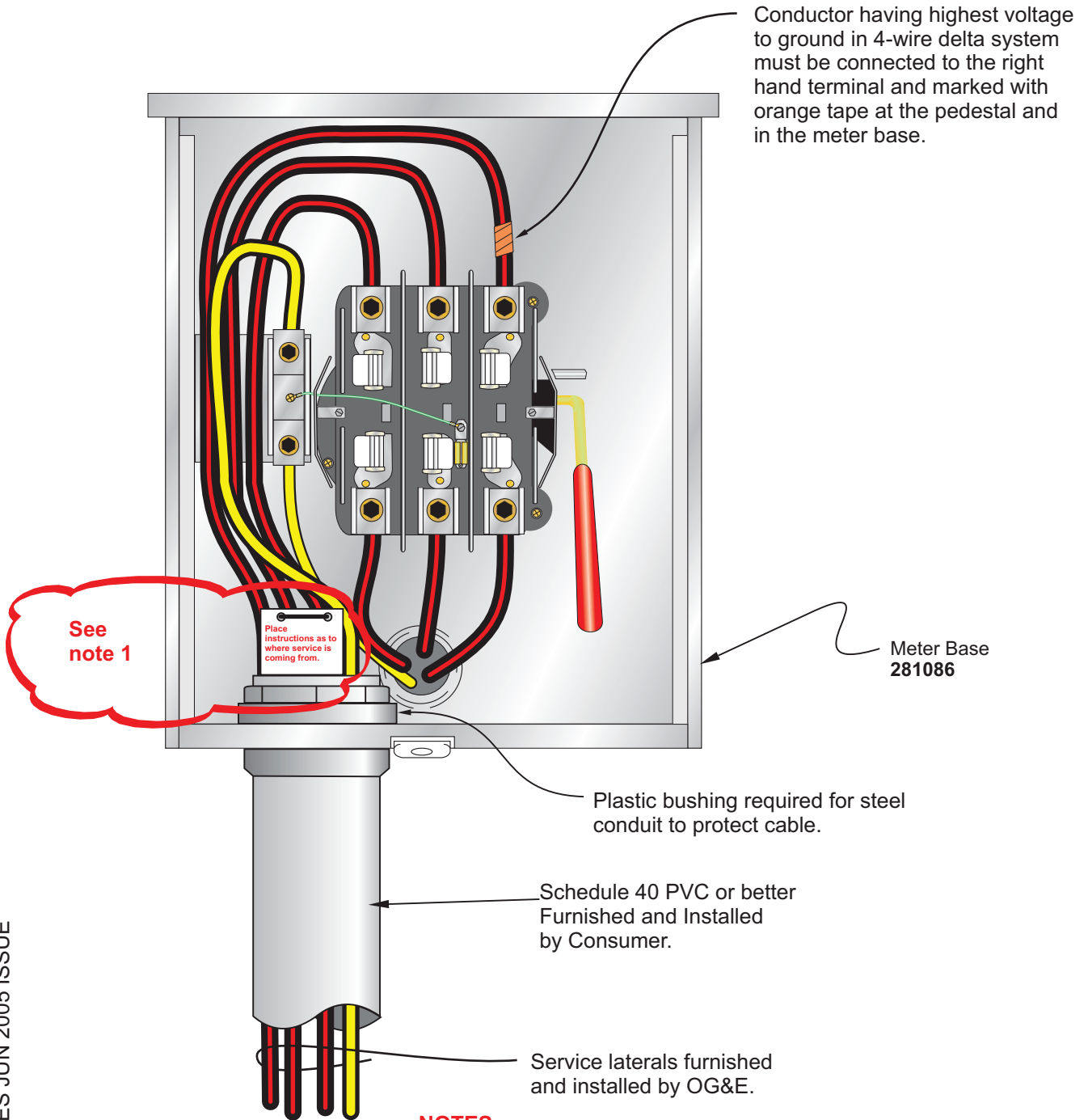


The following is a suggested configuration for meter bases for overhead and underground meters in residential and commercial applications. OG&E Energy Corp., its subsidiaries and affiliates disclaim any liability for the construction or maintenance practices relating to such suggested configuration.

APPROVED Signatures on File

SUPERSEDES JUN 2005 ISSUE

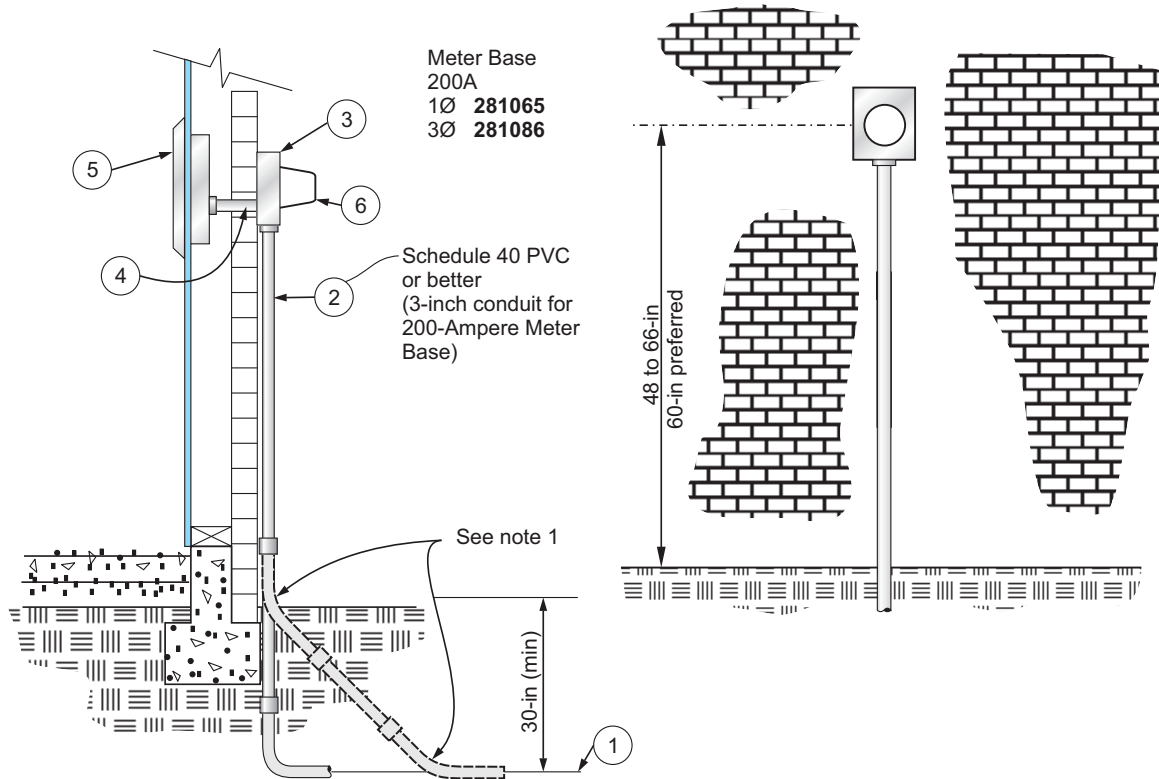


NOTES:

1. Place identifying tag on service conductors with information relating to where service is coming from (pedestal, transformer, pipe or no pipe under driveway.) Refer to U16

CONNECTION DIAGRAM FOR SELF-CONTAINED THREE PHASE FOUR WIRE METER 208Y/120 OR 240Δ/120 VOLT 200-AMPERE MAXIMUM

The following is a suggested configuration for meter bases for overhead and underground meters in residential and commercial applications. OG&E Energy Corp., its subsidiaries and affiliates disclaim any liability for the construction or maintenance practices relating to such suggested configuration.



| ITEM NUMBER | DESCRIPTION | FURNISHED BY | | INSTALLED BY | |
|-------------|---|--------------|----------|--------------|----------|
| | | O.G. & E. | CONSUMER | O.G. & E. | CONSUMER |
| 1 | Service Lateral | X | | X | |
| 2 | Service Lateral Raceway | | X | | X |
| 3 | Meter Base | X | | | X |
| 4 | Service Raceway | | X | | X |
| 5 | Service Equipment | | X | | X |
| 6 | Meter | X | | X | |
| *7 | Grounding Electrode & Grounding Electrode Conductor | | X | | X |

* Not Shown

Notes:

- When foundation obstructions exist, the use of schedule 40 (minimum) conduit with (2) 45-degree elbows to clear obstructions is permissible. The top 45-degree elbow is to be at or below ground level.
- OG&E equipment is to be installed on outside surface of structure and is not to be recessed.
- Refer to U16 for proper identification and marking.**

APPROVED

SIGNATURES ON FILE
SUPERSEDES MAR 2014 ISSUE

**METER INSTALLATION
FOR SELF-CONTAINED SINGLE PHASE OR THREE PHASE METER
208Y/120 OR 240Δ /120 OR 240/120 VOLTS
200-AMPERES MAXIMUM**